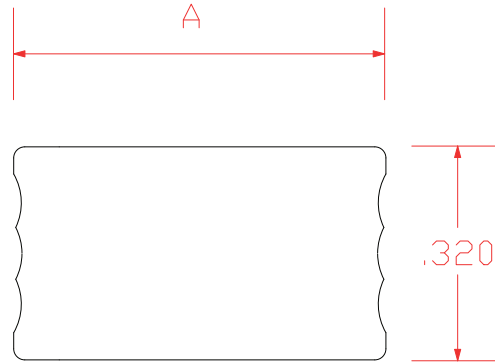




# Air Spacer

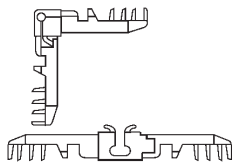
## Rectangular Profile Air Spacer



Laser-welded air spacers are available in mill finish, clear, light bronze, dark bronze, black and gold anodized aluminum, and galvanized and HY-NZ (Nickel Zinc coated) steel. Spacers can be imprinted or cut-to-length. Zipper welds or solid welds with perforated top can be specified.

Standard lengths are 12'8" or 13' depending on the profile.

## Related Connectors

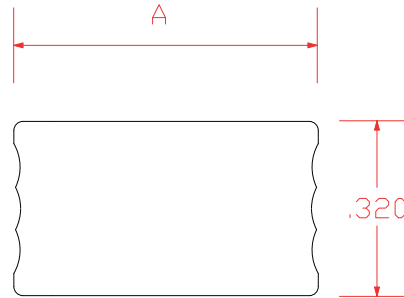


**Nylon Fold & Lock  
Corner Key**



# Air Spacer

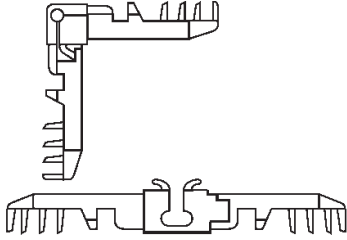
## Rectangular Profile Air Spacer



Part Number	Fractional Size	Air Space in Inches (A)	Pieces per Carton	Linear Feet per Carton based on 156"
WR125	1/8	0.125	250	3,250
WR156	5/32	0.156	375	4,875
WR188	3/16	0.188	300	3,900
WR219	7/32	0.219	250	3,250
WR235	15/64	0.235	400	5,200
WR250	1/4	0.250	400	5,200
WR265	17/64	0.265	350	4,550
WR281	9/32	0.281	350	4,550
WR297	19/64	0.297	350	4,550
WR312	5/16	0.312	360	4,680
WR344	11/32	0.344	300	3,900
WR360	23/64	0.360	265	3,445
WR375	3/8	0.375	265	3,445
WR406	13/32	0.406	266	3,458
WR438	7/16	0.438	266	3,458
WR469	15/32	0.469	234	3,042
WR485	31/64	0.485	216	2,808
WR500	1/2	0.500	216	2,808
WR512	.512	0.512	216	2,808
WR522	.522	0.522	200	2,600
WR531	17/32	0.531	209	2,717
WR563	9/16	0.533	180	2,340
WR594	19/32	0.594	180	2,340
WR625	5/8	0.625	170	2,210
WR656	21/32	0.656	162	2,106
WR688	11/16	0.688	152	1,976
WR719	23/32	0.719	144	1,872
WR750	3/4	0.750	152	1,976
WR781	25/32	0.781	136	1,768
WR812	13/16	0.812	108	1,404
WR844	27/32	0.844	216	2,808



## Rectangular Profile Air Spacer



**Nylon Fold & Lock Corner Key**

Part Number	Fractional Size	Key Part Number	Pieces per Box
WR156	5/32	DR156A	1,800
WR188	3/16	DR188A	1,600
WR219	7/32	DR219A	4,200
WR235	15/64	DR235A	3,800
WR250	1/4	DR250A	3,600
WR265	17/64	DR265A	3,600
WR281	9/32	DR281A	3,400
WR297	19/64	DR297A	3,200
WR312	5/16	DR312A	3,000
WR344	11/32	DR344A	2,800
WR360	23/64	DR360A	2,600
WR375	3/8	DR375A	2,500
WR406	13/32	DR406A	2,400
WR438	7/16	DR438A	2,200
WR469	15/32	DR469A	2,000
WR485	31/64	DR469A	2,000
WR500	1/2	DR500A	1,800
WR512	0.512	DR512A	1,800
WR522	0.522	DR512A	1,800
WR531	17/32	DR531A	1,700
WR563	9/16	DR563A	1,600
WR594	19/32	DR594A	1,500
WR625	5/8	DR625A	1,400
WR656	21/32	DR656A	1,300
WR688	11/16	DR688A	1,300
WR719	23/32	DR719A	1,200
WR750	3/4	DR750A	1,200
WR781	25/32	DR781A	1,200
WR812	13/16	DR812A	1,200